



ISTITUTO COMPRENSIVO STATALE "BUONARROTI"

Via IV Novembre, 38 - 20094 Corsico (MI) - tel. 02.45100100

email: miic88800v@istruzione.it; p.e.c. miic88800v@pec.istruzione.it

www.icbuonarroticorsico.edu.it

Circ. N.165

Ai Docenti iscritti al corso

Al DSGA

Agli atti

Al sito Web

Oggetto: Realizzazione di Percorsi Formativi Annuali di Lingua e Metodologia per Docenti - Cambridge English Placement

Gentili Docenti,

si informa che sono in fase di avvio i **percorsi formativi annuali** relativi alla lingua e alla metodologia per i docenti, in collaborazione con **Cambridge English**.

Dettagli del Test:

- **Tipo di Test:** Cambridge English Placement Test
- **Livelli:** B1, B2 CLIL
- **Scopo:** Accesso ai corsi di formazione (le date del corso verranno comunicate successivamente)

Modalità di Accesso:

Le credenziali (login e password) necessarie per accedere al test saranno consegnate ai docenti direttamente nei plessi, a cura della segreteria.

Nel plesso Salma i codici sono in bidelleria.

Il test va eseguito entro il 23 marzo 2025 ore 24.00

Si allega breve guida

Corsico 18/03/2025

Cordiali saluti

Il Dirigente Scolastico

Dott. Michele Zannini

Documento informatico firmato digitalmente
ai sensi del D.Lgs 82/2005 s.m.i. e norme collegate,
il quale sostituisce il documento cartaceo e la firma autografa.

CEPT Italy Project 2023 - Guida per i candidati

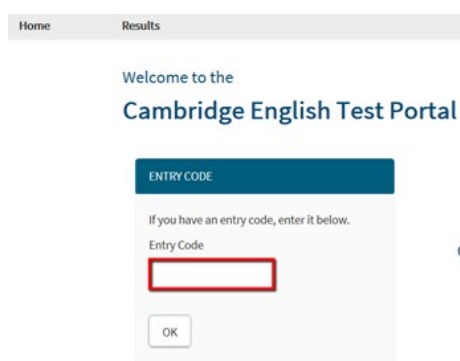
Questa guida mostra ai candidati come si svolge l'esperienza del Cambridge English Placement test – Reading and Listening

Avvertenza: il contenuto del test non viene mostrato in questa guida, ma viene indicato come inizia e finisce ogni parte del test.

1. I candidati devono effettuare il login sul portale Cambridge English Test:

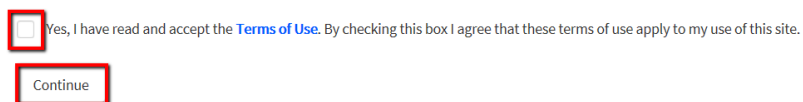
URL: <https://www.metritests.com/metrica/>

I candidati dovranno utilizzando l'entry code che gli verrà fornito



2. I candidati dovranno accettare i Terms and Conditions e cliccare sul bottone "continue" per procedere.

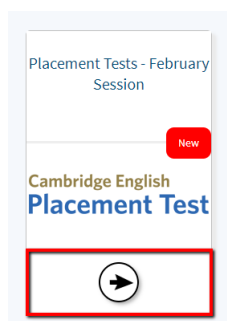
Terms and Conditions



© 2018 Cambridge Assessment English

[Data protection](#) [About us](#) [Accessibility](#) [Terms & conditions](#)

3. Il test apparirà come disponibile al candidato
4. Il candidato dovrà cliccare sulla freccia per iniziare



5. Il candidato verrà portato sulla pagina in cui dovrà inserire i suoi dati. I dati obbligatori sono:

Nome (First Name)

Cognome (Last Name – Family Name)

Data di nascita (date of birth)

Nazionalità (where do you come from - nationality)

Anche se gli altri campi sono facoltativi, verranno richiesti come obbligatori in un secondo momento: gender, lingua madre, email address, mobile phone (per email address e mobile phone si può indicare “I don’t have an email address”).

Per questo progetto, i candidati dovranno indicare nel campo “candidate ID” il nome e la città della loro scuola. Esempio: Liceo Pacinotti – Cagliari.

6. Una volta compilati i campi, dovranno cliccare su Submit.

Michela CEPT Project

Please fill in the form below.

* You must complete all of these fields.

Your Details

First name*		
<input type="text" value="Michela"/>		
Last name (Family name)*		
<input type="text" value="Lei"/>		
Date of Birth *		
<input type="text" value="01"/>	<input type="text" value="02"/>	<input type="text" value="2000"/>
Where do you come from? (your nationality) *		
<input type="text" value="Italy"/>		

Gender

First language

Contact Details

Email address

Phone number [dialling code] [number]


Candidate ID

Confirm Candidate ID

7. I candidati possono vedere un esempio di test che mostra come rispondere ai differenti tipi di domanda. Possono accedervi cliccando sul bottone “CEPT sample test” sul lato destro della pagina.

Timeline

CEPT Italy Demo



Session Details
Click **Open** to start or resume your test.

Open

There is a CEPT sample test, with example questions, to help you get ready for the test.

You will not get a result for the sample test.

See the [CEPT sample test](#).

Back

8. Quanto il candidato è pronto per iniziare, potrà cliccare sul bottone “Open”
9. Il candidato dovrà completare un sound check per assicurare che le sue cuffie funzionino perfettamente

Cambridge English Placement Test



Put on your headphones and click on **Play Sound**.



If you cannot hear the sound, change the volume on your device.

Click on **Play Sound** again.



Once you are happy with the sound, click on the arrow at the bottom of the screen.

10. Una volta completato il test, il candidato dovrà cliccare sulle freccia in basso a destra dello schermo per continuare



Il candidato si troverà la pagina di introduzione che gli darà alcune indicazioni sul test.

11. Quando il candidato è pronto, dovrà cliccare ancora sulla freccia in basso a destra per continuare e appariranno le informazioni del candidato con la richiesta di compilare quelle mancanti:

Cambridge English Placement Test

Please fill in the form before starting the test.

* required

What is your first language? (your mother tongue) *

Gender * ☐ Male ☒ Female ☐ Other

We need your email/mobile (cell) phone number so you can see all the tests you take on the Cambridge English portal with one log-in. We can then print a Test Report Form that shows all your results.

Email address * ?

☐ I don't have an email address.

Mobile Phone (Cell) number *

☐ I don't have a mobile phone.

Organisation

Candidate ID Number

National ID number

Department

Please click on the arrow to continue.

12. Cliccando sulla freccia, il candidato si troverà in questa pagina dove dovrà cliccare il tastino Start in basso a destra

Cambridge English Placement Test

When you are ready to start please click the Start button below

 Start

Una volta che il candidato ha finito il test, troverà questa pagina:

Your test is now complete. Please close your browser.

Close

Cliccando su Close verrà riportato alla pagina di Timeline

Timeline

CEPT Italy Demo



Session Details

This test has now finished.

There is a CEPT sample test, with example questions, to help you get ready for the test.

You will not get a result for the sample test.

See the [CEPT sample test](#).

Back

Cambridge English Placement Test



Put on your headphones and click on **Play Sound**.



If you cannot hear the sound, change the volume on your device.

Click on **Play Sound** again.



Once you are happy with the sound, click on the arrow at the bottom of the screen.



Reading & Listening Introduction

Cambridge English Placement Test

This is an adaptive test; as you work through the test the computer checks your answers then chooses suitable tasks to match your level of knowledge. Try to answer as many questions as you can, because you may not get a report if you do not answer enough questions.

There are two parts to the test: Listening and Reading.

In the Listening part of the test, there will be a pause before the audio starts so you can read the question(s). You will hear each recording twice.

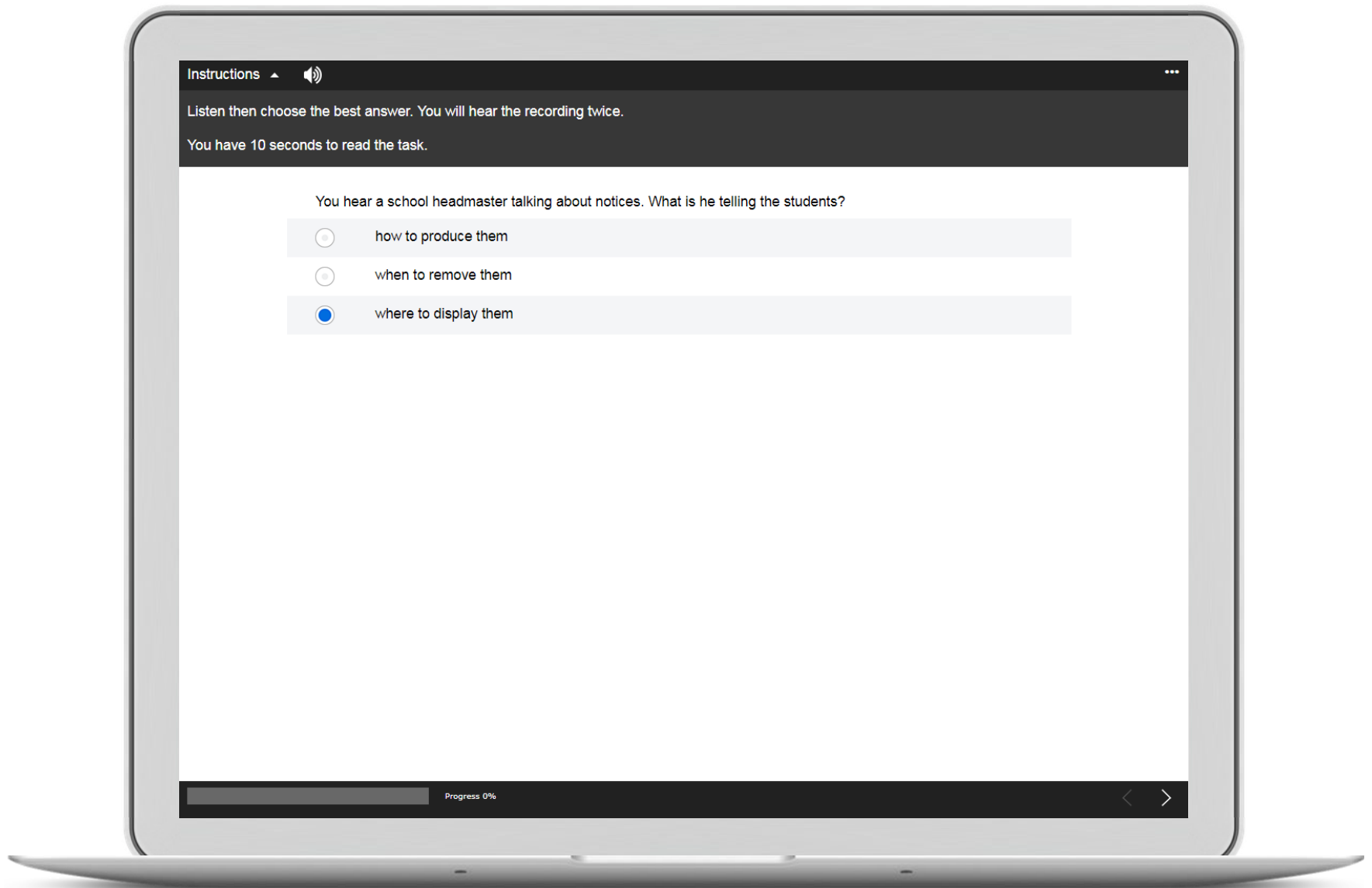
Click the arrow in the bottom-right corner of the screen to move through the test.

The progress indicator at the bottom of the screen will show you how much of the test you have completed.

Now click on the right arrow to continue.

< Start

Reading & Listening Instructions



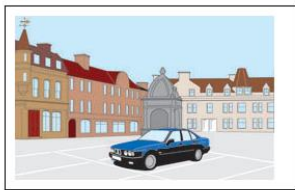
Listen and select

Instructions ▲ 🔊

Listen then choose the best answer. You will hear the recording twice.

You have 10 seconds to read the task.

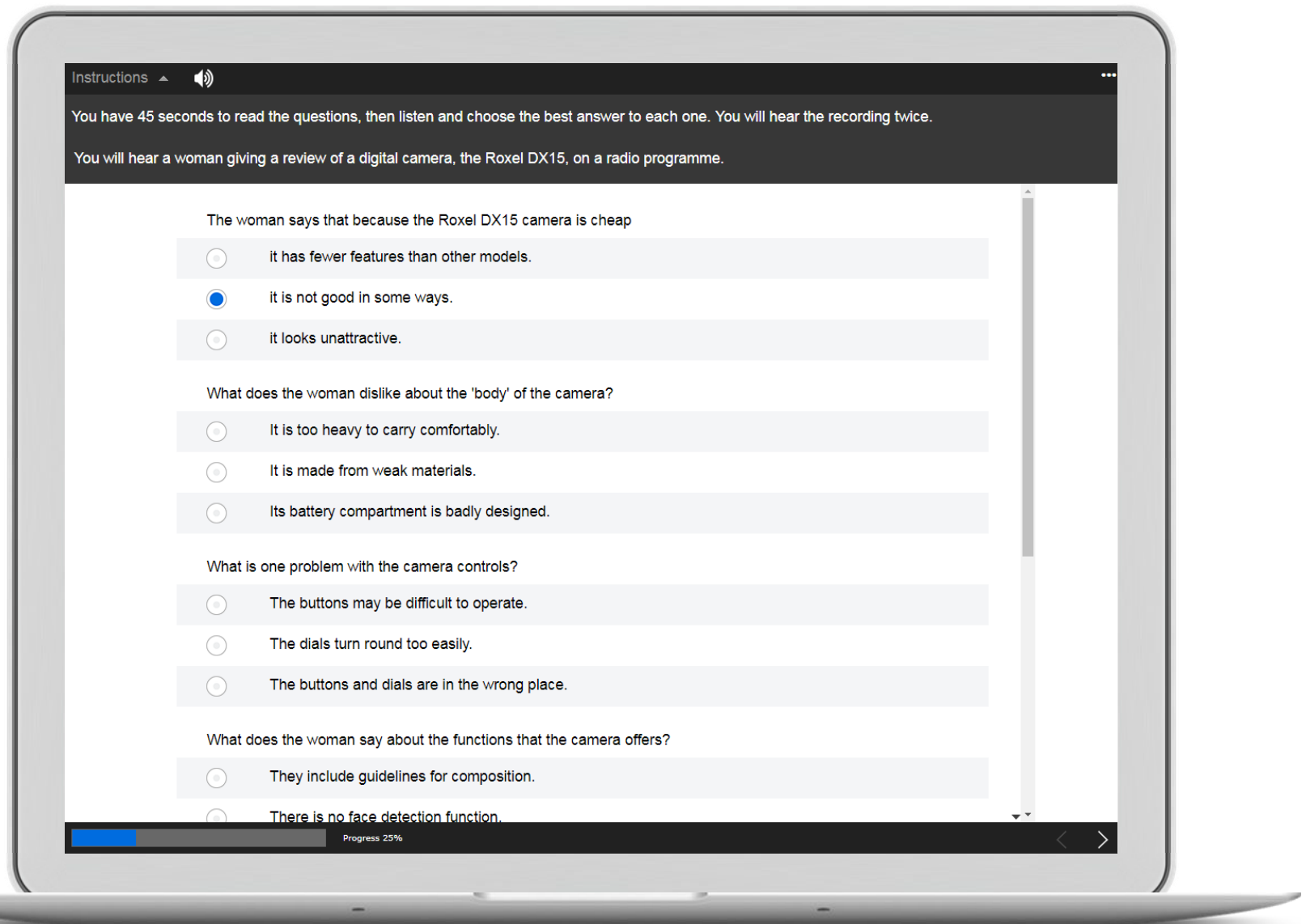
Where will the man leave his car tonight?



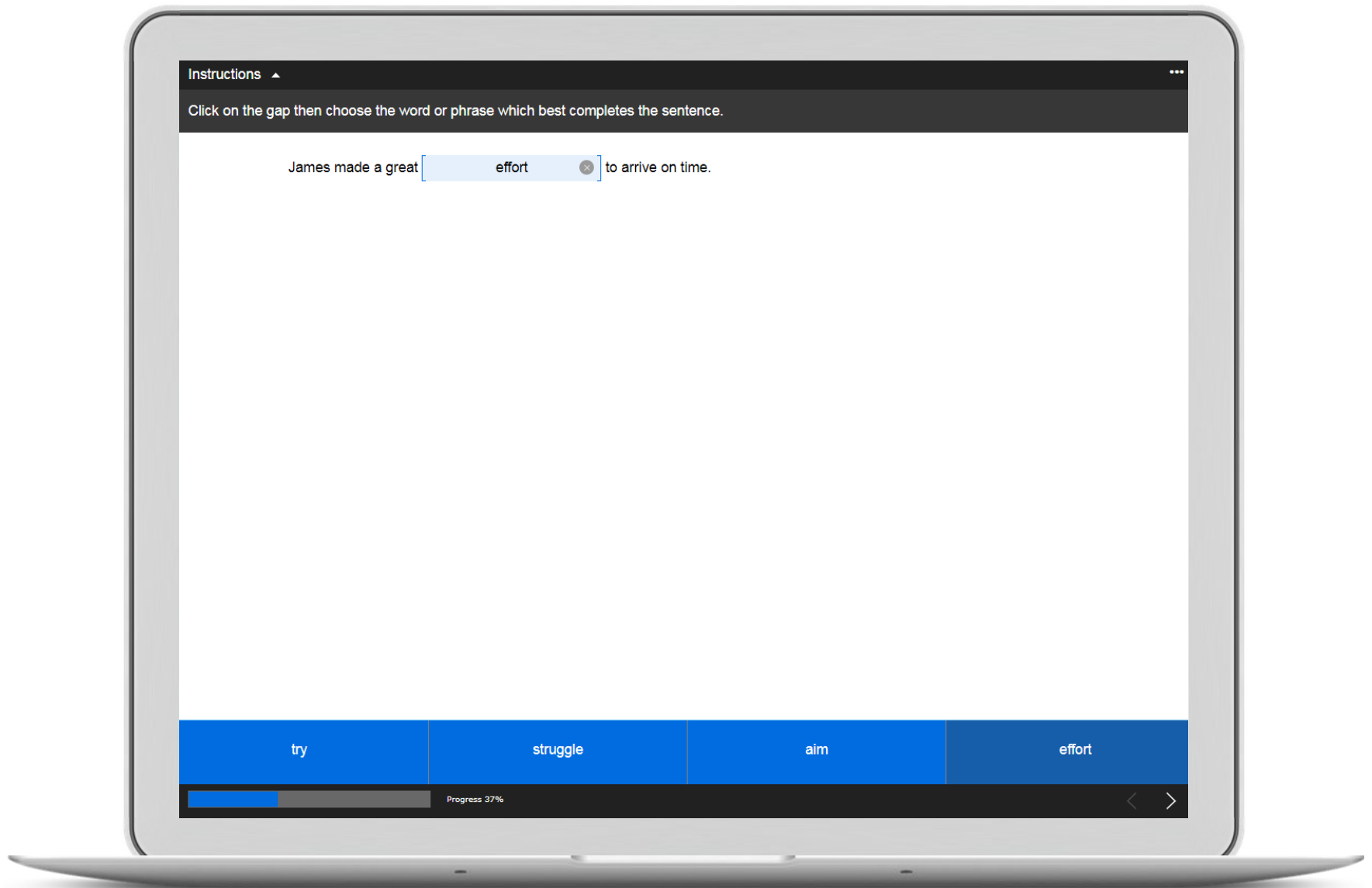
Progress 12%



Listen and select



Extended listening



Gapped sentences

Instructions

Click on each gap then choose the word or phrase which you think fits best.

Birth of the movies

Moving pictures were invented by the brothers Louis and Auguste Lumière at the end of the 19th century. Movies very

quickly



became popular all over the world. In 1907 the first studios were built in a

of Los Angeles called Hollywood. It was the perfect place, close to many kinds of natural scenery.

the 1920s, Hollywood was the center of the world film . To begin

with, the movies had no sound. Words on screen from time to time to explain the story.

quickly

immediately

fast

early

Progress 50%

Multiple-choice gap-fill

Instructions ▲

For these questions, type the correct answer in each gap.
Type only one word in each gap.

To: Silvio

From: Lars

Hi Silvio,

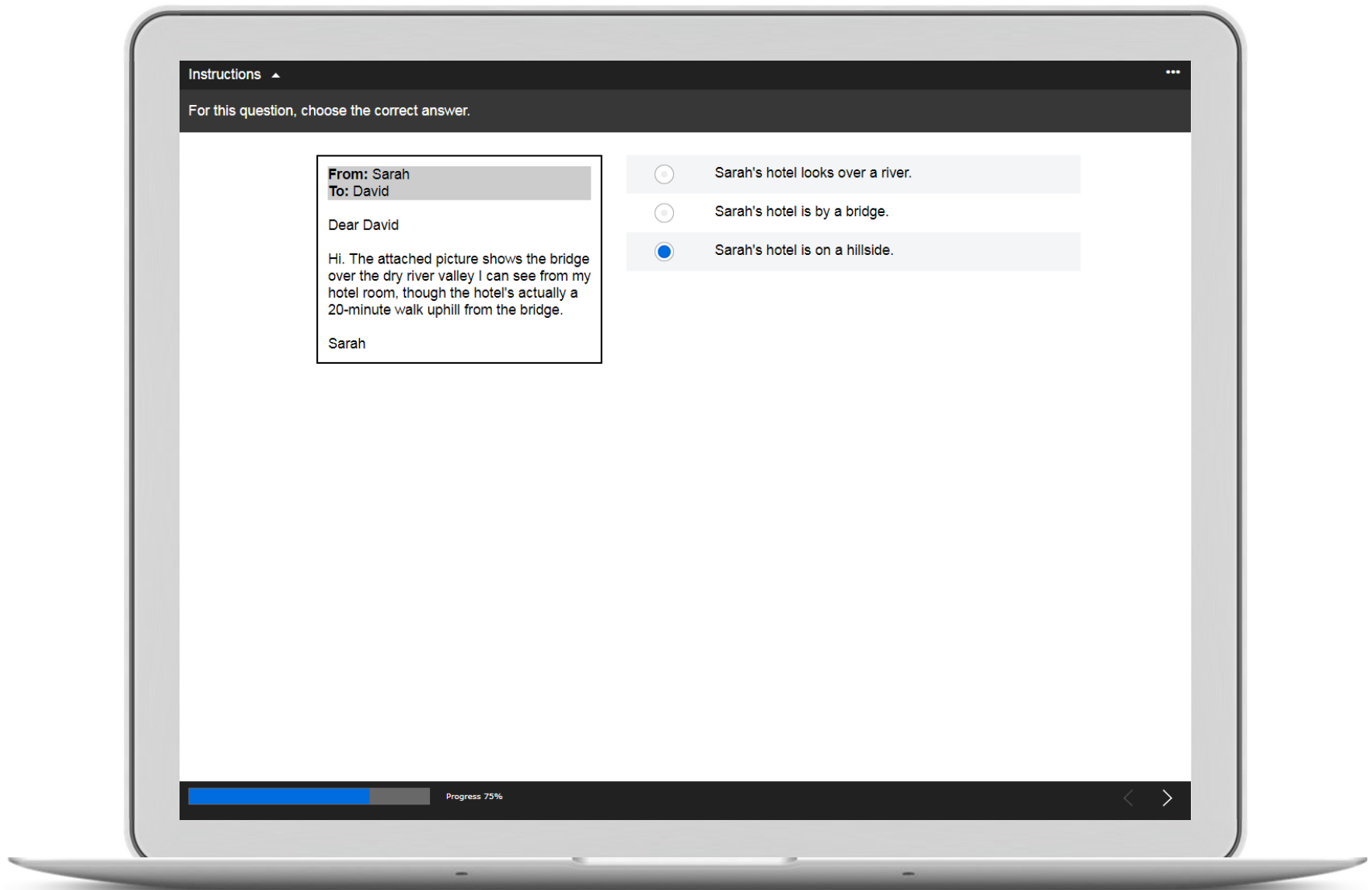
There's [going] to be an extra swimming competition next week and not [] people in the
team [] free to do it. Jane [] you to swim in six races! Is that
[] much swimming for you? What do you think?

Lars

 Progress 62%



Open gap-fill



Read and select

Instructions ▲

Read the text then choose the best answer to each question.

Making a career in music

Are you desperate to have a music career? First off, remember this - no one really knows who's going to get to the top. All those talent scouts, those so-called star-makers, are just guessing. So go into your music career knowing that there's no mystery ingredient. What you need is confidence, an appreciation of a good tune, luck and lots of charm.

In a market where there's room for songs of every kind, you have a chance of selling your music. The trick is to present yourself as the only person with a particular style or talent. And why not be a bit boastful about it? Don't be shy about networking with all sorts of people - it's surprising who can help you. Start by playing your music to the owners of local music clubs.

Prepare for poverty - you probably won't be partying with the stars for a while. Get a job, or even several jobs. Best of all, seek out music-related work. You can play at wedding parties, give music instruction, or write songs to advertise businesses on local radio. This way, you get that added bit of musical experience to boast about at your first audition or interview.

Be professional. Take a look at your website. If it looks horrible, then it's time to rethink the design. Make it attractive, but accessible. It must be straightforward for people to find their way around the site or they'll lose interest. A record deal is no longer necessarily the first goal these days - you can build an audience online first, and then the big recording labels might take notice.

Investigate all sales options. You can sell CDs through local gift shops, bookstores or a heap of other outlets. Who knows, companies in your neighbourhood may even agree to sponsor small tours or concerts you arrange. Be inventive and try your hand at playing in streets or market places, to get your music heard.

Consider learning about the music business by getting a job with a



The first paragraph says that anyone who wants a career in music



How are musicians advised to market themselves?



They should have a wide variety of songs to perform.



They should show that they are different from other musicians.



They should only contact people they know will be useful to them.



While musicians are waiting for their career to start, they should



What advice is given to musicians concerning their websites?



Regarding sales, the fifth paragraph suggests that musicians could



What does the final paragraph say about working for music companies?

Progress 67%




Extended reading



End of test

Cambridge English Placement Test (CEPT) - Technical and Hardware Requirements

 support.cambridgeenglish.org/hc/en-gb/articles/210044266-Cambridge-English-Placement-Test-CEPT-Technical-and-Hardware-Requirements



Articles in this section

- [Cambridge English Placement Test \(CEPT\) - Changing Test Session Window](#)
- [Cambridge English Placement Test \(CEPT\) - Agent User Guide](#)
- [Cambridge English Placement Test \(CEPT\) - Venues](#)
- [CEPT - Users](#)
- [Cambridge English Placement Test \(CEPT\) - Sessions](#)
- [Cambridge English Placement Test \(CEPT\) - Purchasing Tests and Viewing Test Credit Availability](#)
- [Cambridge English Placement Test \(CEPT\) - Adding Entries](#)
- [Cambridge English Placement Test \(CEPT\) - Adding entries - Entry codes](#)
- [Cambridge English Placement Test \(CEPT\) - Adding Entries - Bulk Entry Import](#)
- [Cambridge English Placement Test \(CEPT\) - Adding Entries - Single Candidate Entry](#)

[See more](#)

Related articles

- [Cambridge English Placement Test \(CEPT\) - FAQs](#)
- [Cambridge English Placement Test \(CEPT\) - Types of CEPT Questions](#)
- [Cambridge English Placement Test \(CEPT\) - Agent User Guide](#)
- [How to use Exam Lift](#)
- [Funded Research Programme: FAQs](#)



[Tim Preston](#)

- Updated 1 year ago

[Follow](#)

The **minimum** technical requirements that each computer must have to be able to run a test correctly, are shown in the table below:

Minimum requirement

Processor	Pentium III 800 MHz or equivalent
RAM	512 MB
Free hard drive space	4 GB
Screen Resolution	1280 x 1024
Operating System	<p>Windows 7 or later</p> <p>Apple Macs running MacOS 10.12.6 (Sierra) and above</p> <p>Chromebooks running ChromeOS 94+</p> <p>The Cambridge English Test portal and any tests run through it are not currently supported on:</p> <ul style="list-style-type: none">• iOS devices• Android devices or any tablets• Linux
Web browser	<p>Windows</p> <p>Google Chrome and Mozilla Firefox are compatible and supported browsers.</p> <p>Newer versions of Microsoft Edge (version 93+) are compatible and supported.</p> <p>Macs</p> <p>Google Chrome is the only compatible and supported browser.</p> <p>Chromebooks</p> <p>Google Chrome is the only compatible and supported browser.</p>

Internet bandwidth	2 Mbps upload and download per candidate The minimum bandwidth requirements are for each computer running the test, referring to local network speeds. When running multiple tests concurrently on the same internet connection you should ensure this bandwidth is available to each computer. If less than 2 Mbps is available for each candidate, the test may take longer to run.
Adobe Reader	Latest version (must be able to read PDFs).
Sound Card	Yes
Headphones	Over-ear and closed back – the earpieces of the headphones should cover the entire ear, preferably with good padding for comfort.
Headphone connections	There is no preference on plugs (that is, USB or standard stereo) but please note that the use of USB means that appropriate drivers must be installed and confirmed as working before the test day.

Article is closed for comments.

Cambridge English Placement Test



Put on your headphones and click on **Play Sound**.



If you cannot hear the sound, change the volume on your device.

Click on **Play Sound** again.



Once you are happy with the sound, click on the arrow at the bottom of the screen.



Reading & Listening Introduction

Cambridge English Placement Test

This is an adaptive test; as you work through the test the computer checks your answers then chooses suitable tasks to match your level of knowledge. Try to answer as many questions as you can, because you may not get a report if you do not answer enough questions.

There are two parts to the test: Listening and Reading.

In the Listening part of the test, there will be a pause before the audio starts so you can read the question(s). You will hear each recording twice.

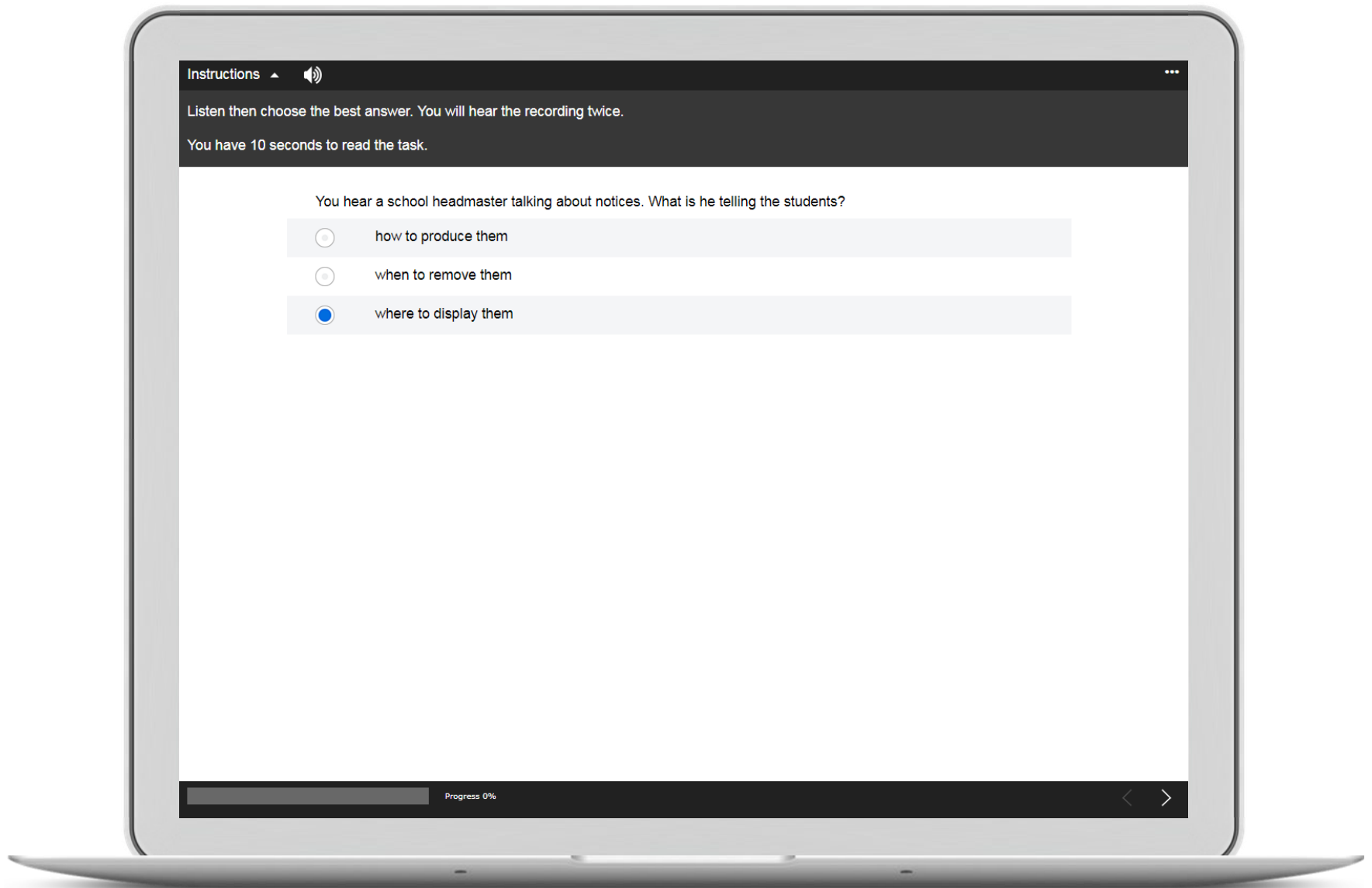
Click the arrow in the bottom-right corner of the screen to move through the test.

The progress indicator at the bottom of the screen will show you how much of the test you have completed.

Now click on the right arrow to continue.

< Start

Reading & Listening Instructions



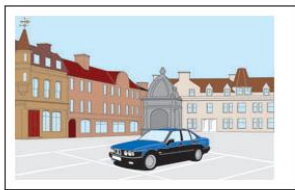
Listen and select

Instructions ▲ 🔊

Listen then choose the best answer. You will hear the recording twice.

You have 10 seconds to read the task.

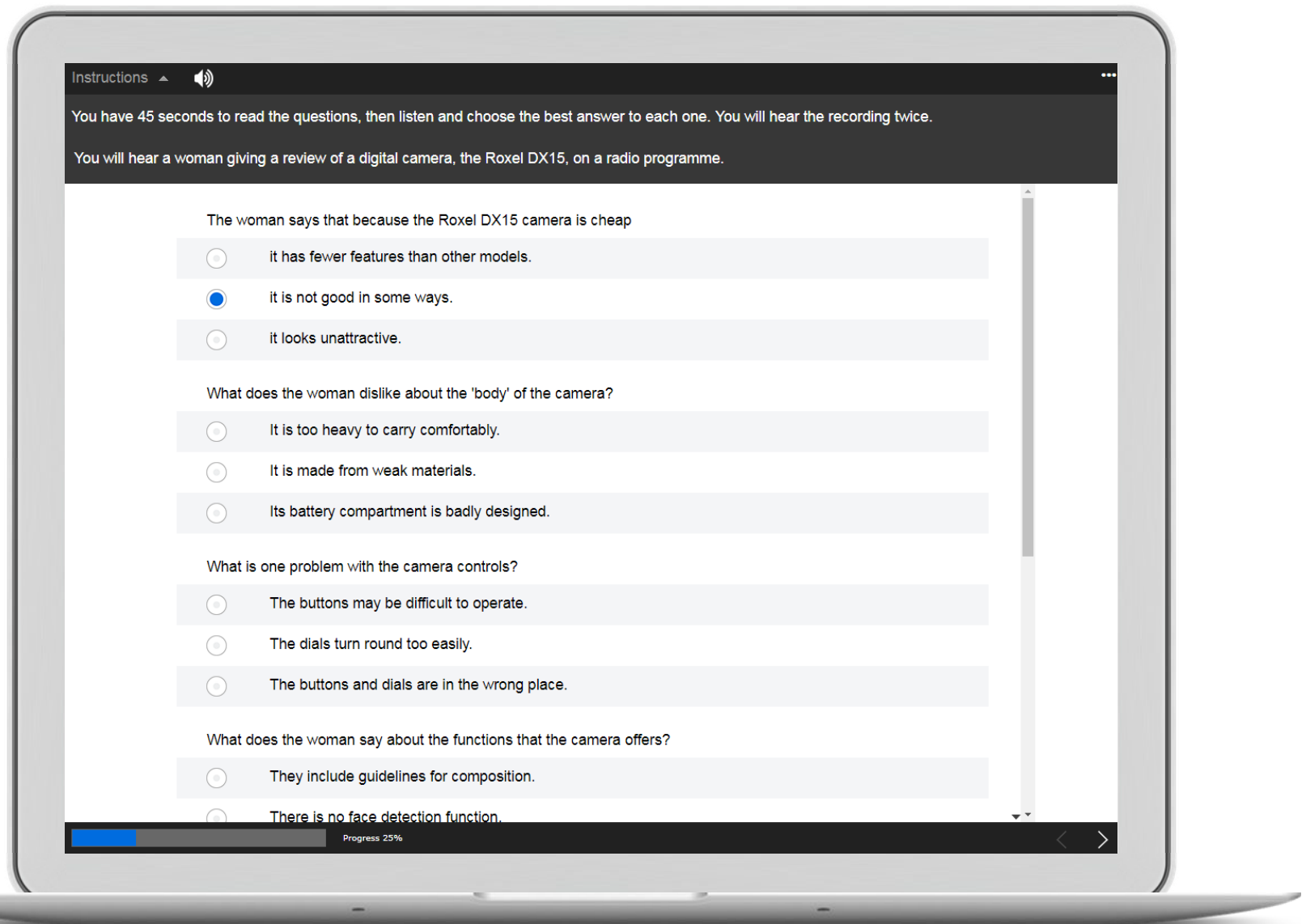
Where will the man leave his car tonight?



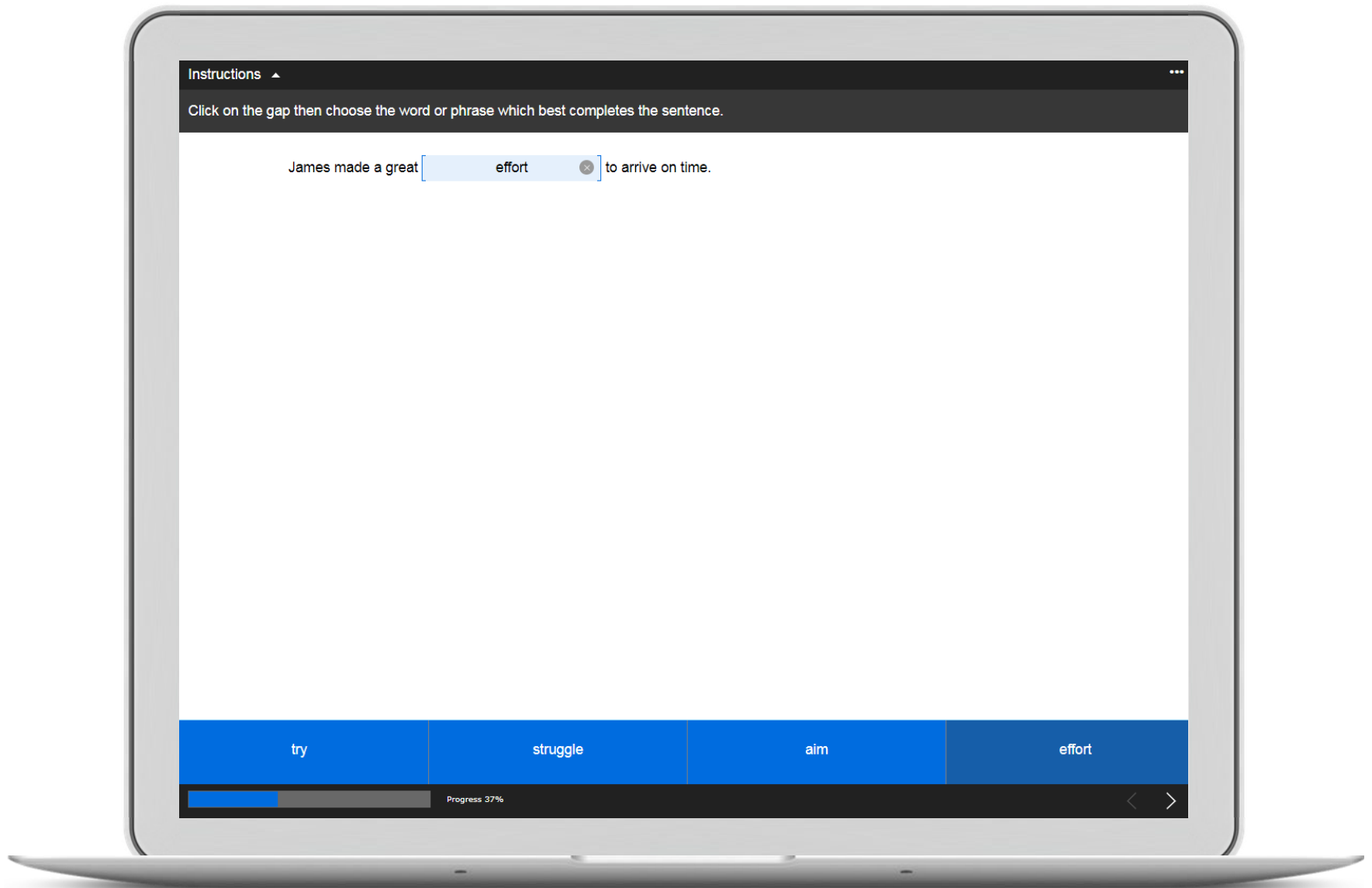
Progress 12%



Listen and select



Extended listening



Gapped sentences

Instructions

Click on each gap then choose the word or phrase which you think fits best.

Birth of the movies

Moving pictures were invented by the brothers Louis and Auguste Lumière at the end of the 19th century. Movies very

quickly



became popular all over the world. In 1907 the first studios were built in a

of Los Angeles called Hollywood. It was the perfect place, close to many kinds of natural scenery.

the 1920s, Hollywood was the center of the world film . To begin

with, the movies had no sound. Words on screen from time to time to explain the story.

quickly

immediately

fast

early

Progress 50%

Multiple-choice gap-fill

Instructions ▲

For these questions, type the correct answer in each gap.
Type only one word in each gap.

To: Silvio

From: Lars

Hi Silvio,

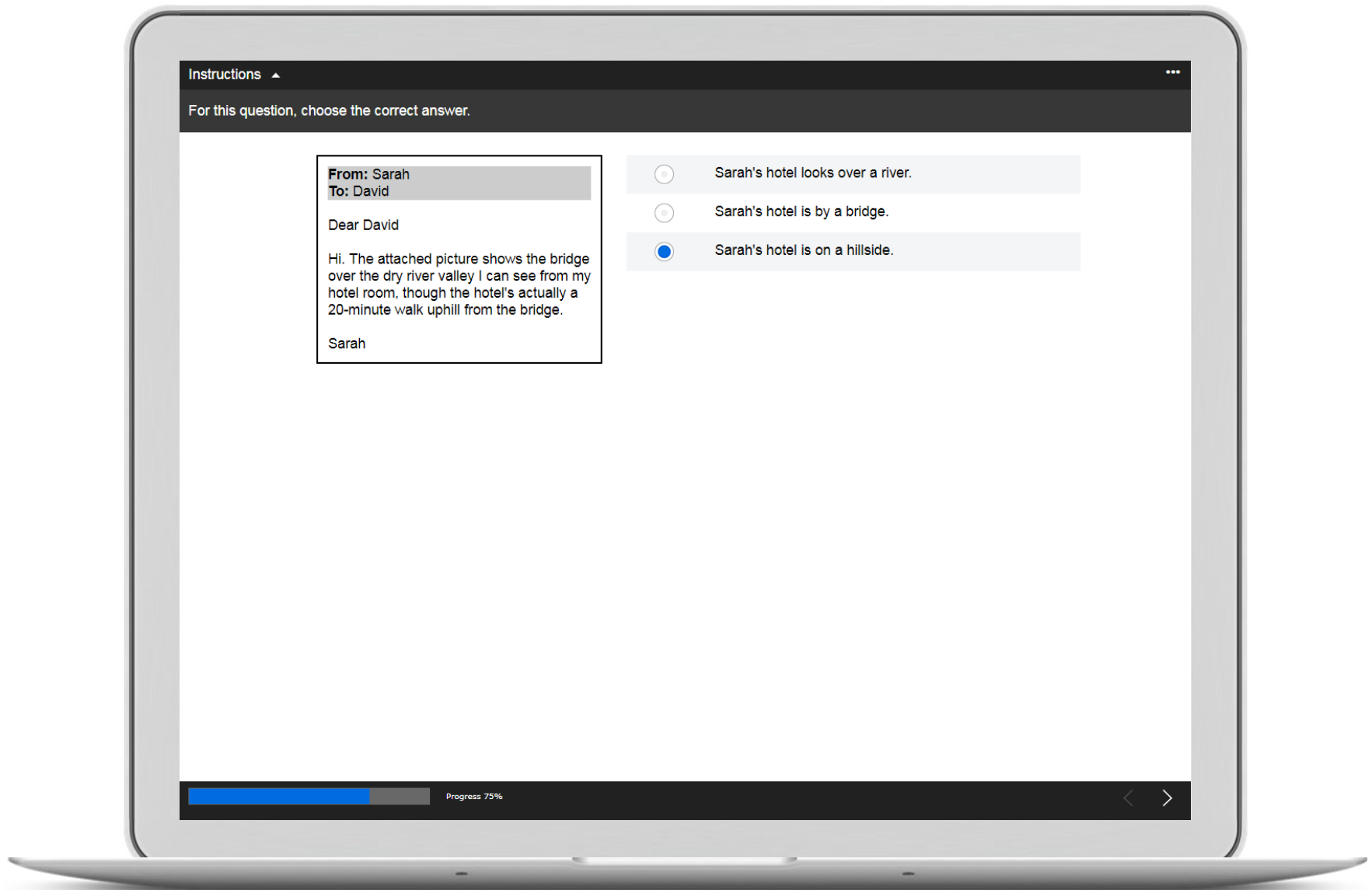
There's [going] to be an extra swimming competition next week and not [] people in the
team [] free to do it. Jane [] you to swim in six races! Is that
[] much swimming for you? What do you think?

Lars

 Progress 62%



Open gap-fill



Read and select

Instructions ▲

Read the text then choose the best answer to each question.

Making a career in music

Are you desperate to have a music career? First off, remember this - no one really knows who's going to get to the top. All those talent scouts, those so-called star-makers, are just guessing. So go into your music career knowing that there's no mystery ingredient. What you need is confidence, an appreciation of a good tune, luck and lots of charm.

In a market where there's room for songs of every kind, you have a chance of selling your music. The trick is to present yourself as the only person with a particular style or talent. And why not be a bit boastful about it? Don't be shy about networking with all sorts of people - it's surprising who can help you. Start by playing your music to the owners of local music clubs.

Prepare for poverty - you probably won't be partying with the stars for a while. Get a job, or even several jobs. Best of all, seek out music-related work. You can play at wedding parties, give music instruction, or write songs to advertise businesses on local radio. This way, you get that added bit of musical experience to boast about at your first audition or interview.

Be professional. Take a look at your website. If it looks horrible, then it's time to rethink the design. Make it attractive, but accessible. It must be straightforward for people to find their way around the site or they'll lose interest. A record deal is no longer necessarily the first goal these days - you can build an audience online first, and then the big recording labels might take notice.

Investigate all sales options. You can sell CDs through local gift shops, bookstores or a heap of other outlets. Who knows, companies in your neighbourhood may even agree to sponsor small tours or concerts you arrange. Be inventive and try your hand at playing in streets or market places, to get your music heard.

Consider learning about the music business by getting a job with a



The first paragraph says that anyone who wants a career in music



How are musicians advised to market themselves?



They should have a wide variety of songs to perform.



They should show that they are different from other musicians.



They should only contact people they know will be useful to them.



While musicians are waiting for their career to start, they should



What advice is given to musicians concerning their websites?



Regarding sales, the fifth paragraph suggests that musicians could



What does the final paragraph say about working for music companies?

Progress 67%



Extended reading



End of test

Cambridge English Placement Test (CEPT) - Technical and Hardware Requirements

 support.cambridgeenglish.org/hc/en-gb/articles/210044266-Cambridge-English-Placement-Test-CEPT-Technical-and-Hardware-Requirements



Articles in this section

- [Cambridge English Placement Test \(CEPT\) - Changing Test Session Window](#)
- [Cambridge English Placement Test \(CEPT\) - Agent User Guide](#)
- [Cambridge English Placement Test \(CEPT\) - Venues](#)
- [CEPT - Users](#)
- [Cambridge English Placement Test \(CEPT\) - Sessions](#)
- [Cambridge English Placement Test \(CEPT\) - Purchasing Tests and Viewing Test Credit Availability](#)
- [Cambridge English Placement Test \(CEPT\) - Adding Entries](#)
- [Cambridge English Placement Test \(CEPT\) - Adding entries - Entry codes](#)
- [Cambridge English Placement Test \(CEPT\) - Adding Entries - Bulk Entry Import](#)
- [Cambridge English Placement Test \(CEPT\) - Adding Entries - Single Candidate Entry](#)

[See more](#)

Related articles

- [Cambridge English Placement Test \(CEPT\) - FAQs](#)
- [Cambridge English Placement Test \(CEPT\) - Types of CEPT Questions](#)
- [Cambridge English Placement Test \(CEPT\) - Agent User Guide](#)
- [How to use Exam Lift](#)
- [Funded Research Programme: FAQs](#)



[Tim Preston](#)

- Updated 1 year ago

[Follow](#)

The **minimum** technical requirements that each computer must have to be able to run a test correctly, are shown in the table below:

Minimum requirement

Processor	Pentium III 800 MHz or equivalent
RAM	512 MB
Free hard drive space	4 GB
Screen Resolution	1280 x 1024
Operating System	<p>Windows 7 or later</p> <p>Apple Macs running MacOS 10.12.6 (Sierra) and above</p> <p>Chromebooks running ChromeOS 94+</p> <p>The Cambridge English Test portal and any tests run through it are not currently supported on:</p> <ul style="list-style-type: none">• iOS devices• Android devices or any tablets• Linux
Web browser	<p>Windows</p> <p>Google Chrome and Mozilla Firefox are compatible and supported browsers.</p> <p>Newer versions of Microsoft Edge (version 93+) are compatible and supported.</p> <p>Macs</p> <p>Google Chrome is the only compatible and supported browser.</p> <p>Chromebooks</p> <p>Google Chrome is the only compatible and supported browser.</p>

Internet bandwidth	2 Mbps upload and download per candidate The minimum bandwidth requirements are for each computer running the test, referring to local network speeds. When running multiple tests concurrently on the same internet connection you should ensure this bandwidth is available to each computer. If less than 2 Mbps is available for each candidate, the test may take longer to run.
Adobe Reader	Latest version (must be able to read PDFs).
Sound Card	Yes
Headphones	Over-ear and closed back – the earpieces of the headphones should cover the entire ear, preferably with good padding for comfort.
Headphone connections	There is no preference on plugs (that is, USB or standard stereo) but please note that the use of USB means that appropriate drivers must be installed and confirmed as working before the test day.

Article is closed for comments.